

# smart house

Surprisingly Affordable. Surprisingly Smart.™



No.1 Prefab Company in the Philippines

# Standard Container House

<b>Dimensions</b>	6m length x 2.4m Width x 2.6m Height
<b>Stacking</b>	Stackable up to 2 floors
<b>Flooring</b>	plywood flooring with linooleum tiles
<b>Walls and roof</b>	2" Styrofoam insulation on walls and roof with oven baked double sided Galvanized Iron

## ASSEMBLY

No need to use crane in order to assemble, one to two person can carry each part of container house while disassembled. Can be lifted by crane after installation



## ELECTRICAL

Exposed electrical wires with pvc mouldings. Complete with 2 flourescent light, one main switch, 2 outlets and aircondition outlet

## WINDOWS

Choice of 4 pcs. PVC sliding windows or 2 pcs. windows with security shutter

## DOOR

Double sided G.i sheet with 2" Styrofoam insulation

## BEST USES

Temporary Site Office • Clinic • Barracks • Canteen • Minishop

# Luxury Type Container House

<b>Dimensions</b>	6.058m Length x 2.438m Width x 2.593m Height
<b>Walls</b>	3" Polystyrene Insulation
<b>Roof</b>	3" Polyurethane Insulation with Interior Roof Board
<b>Skin</b>	Double sided .4mm Powder Coated G.I. Sheet
<b>Door</b>	Security Steel Door with Lock Set
<b>Flooring</b>	18mm Plywood Base Panel & 8mm Laminated Floor Board with Baseboard
<b>Windows</b>	2pcs PVC Windows sized 800x2000 with Security Shutter
<b>Lighting</b>	2pcs Fluorescent Light with Housing
<b>Stacking</b>	Can stack a total of 3 Container House Combined
<b>Lifting</b>	Can be lifted using Crane or Forklift
<b>Electrical</b>	Electrical wires are hidden with 2 lights, 1 switch, 2 sockets, 1 electric distribution box, 1 protective current switch: ICEE connection plug/socket
<b>Steel Frame</b>	3.0mm thickness Steel Plate (Galvanized) 2 coats of surface painting
<b>Others</b>	210 km/hr Wind Resistance
	Earthquake Resistance is 8 Grade
	Flatpacked, Joinable, Modular, Stackable





# Standard Prefab Building

<b>Dimensions</b>	Customizable with minimum size for first floor 3.8m x 3.8m and minimum size for 2nd floor is 5.62m x 5.62m and can extend based on clients requirement.
<b>Stacking</b>	Maximum 2 floors
<b>Steel Structure</b>	Using c channel to insert our 50mm insulated expanded polystyrene panels
<b>Roofing</b>	Double sided oven baked ribbed type g.i sheet with 50mm eps panels
<b>Walls</b>	Double sided oven baked plain G.i sheet with 50mm eps panels
<b>Windows</b>	PVC sliding with same size as panels so it is easy to relocate windows anytime.
<b>Doors</b>	Double Sided G.i Sheet with 2" Styrofoam Insulation
<b>Other</b>	2nd floor flooring is Plywood



## BEST USES

Classroom • Dormitory • Office • Warehouse • Canteen • Low Cost Housing

## ADVANTAGES

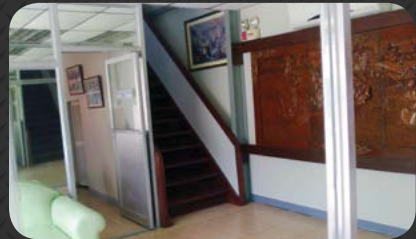
Same sizes of wall panels meaning it is easy to assemble & disassemble even if you combine multi units of standard prefab when disassembled, wind proof, earth quake proof, Our lowest priced prefab.

## ADDITIONAL OPTIONS

electrical, plumbing, toilet and bath, cement slab, permits

# Luxury Type Prefab

<b>Dimensions</b>	customizable dimensions up to clients specific exact size
<b>Structure</b>	Choice of tubular structure that does not need foundation and can be made up to two floors or using Strong I beam steel structure that needs column foundations that can extend up to 5 floors
<b>Roofing</b>	choice of single slope, double slope and 4 slope
<b>Roofing Material</b>	double sided oven baked ribbed type g.i sheet with 50mm eps panels
<b>Walls</b>	double sided oven baked plain G.i sheet with 50mm eps panels
<b>Windows</b>	standard pvc sliding windows or based on clients specs
<b>Flooring</b>	2nd to 5th floor flooring is plywood but can be made cement slab
<b>Door</b>	Double sided G.i sheet with 2" Styrofoam insulation



## BEST USES

Classroom • Dormitory • Barracks • Office • Warehouse  
Canteen • Low Cost Housing

## ADVANTAGES

Best exterior look, customizable size, customizable roof designs, customizable weight requirement, customizable wind resistance and earth quake resistance level

## ADDITIONAL OPTIONS

Electrical, plumbing, toilet and bath, cement slab, permits and foundation

# Prefab Warehouse

Light steel structure building is a new type of building structure system, which is formed by the main steel framework lining up H section, Z section and U section steel components, roof and walls using a variety of panels and other components such as windows, doors, cranes, etc. Light steel structure building is widely used in WAREHOUSES, large factories, etc.



## Characteristics

- Wide span: single span or multiple spans, the max span clear distance is 40m, without middle columns.
- Low cost
- Fast construction and easy installation
- Long term service life: more than 50 years
- Other characteristics: environmental protection, stable structure, earthquake resistant, water proof, and energy efficient
- Customizable height requirement
- Customizable wall and roof materials and size
- Customizable door materials and size
- Customizable window size and materials
- Can be assembled & disassembled. 99% of materials can be used on relocated site
- Can add accessories based on clients requirements



# Modular Log Cabin

## SPECIFICATION

Modular Log House is made of spruce wood for roof and floor. It can be Styrofoam, polyurethane and rockwool for insulation.

The standard modular log house components are connected each other, and without any nails on the wall, except the roof and the floor. We use the special house building structure.

The house can be assembled and disassembled more than 6 times, and the service life depends on the

wall thickness. Life span more 30-100 years. The thicker the wall the longer lifespan.

## TRANSPORTATION

The structure groupware are bundled together, and the parts and the materials are flat packed separately, then shipped to the destination.

## EQUIPMENT

Modular Log House can be delivered with or without sanitary installation and painting.

<b>Wind Resistance</b>	Grade 11
<b>Earthquake Resistance</b>	Grade 8
<b>Live load capacity of roofing</b>	0.5kn/m <sup>2</sup>
<b>External and internal wall heat transmission coefficient</b>	0.35Kcal/m <sup>2</sup> hc
<b>2nd floor load capacity</b>	150kg/m <sup>2</sup>
<b>Live load of corridor</b>	2.0kn/m





<b>Foundation</b>	The foundation will be made of concrete, and steel columns connected to the foundation with bolts. We will supply construction plan with the house. (foundation not included)
<b>Wall and Roof Panels</b>	Grade 8 Thickness: 36mm, 73mm, 112mm SPRUCE WOOD Width: wall panel: 130mm Roof panel: 89mm
<b>Length (mm)</b>	0.5kn/m <sup>2</sup> Given continuous production, the plate length can be confirmed according to the project demand and shall not exceed 12000mm in general limited to transportation conditions.
<b>Roof and Covering</b>	0.35Kcal/m <sup>2</sup> hc 18mm roof and covered by asphaltum tile for water proof and fire proof (can last 10 years)
<b>Doors and Windows</b>	150kg/m <sup>2</sup> We use the wood door with single glass and PVC windows and double glasses. We can also supply as your requirements.
<b>Floor Thickness</b>	18mm, 36mm
<b>Not Included</b>	Cement (slab), Foundation, painting of house. electrical



# Guard House or Kiosk

## Specifications

2.5mL x 1.5mW x 2mH or  
1.5mL x 1.5mW x 2.3mH

### Includes

- Windows
- Double sided powder coated sandwich panel doors with 2" Styrofoam insulation
- Roof is corrugated gi sheet with 2" Styrofoam insulation
- With steel base for easy lifting
- Can customize size based from your specification



# Prefab Villa

## COMPONENT

COMPONENT	
<b>Roof Panel</b>	Roof Tile + Housewrap + OSB Board + Rock Wool + Light Steel W
<b>External Wall Panel</b>	PU + Housewrap + OSB Board + Rock Wool + Light Steel + Gypsum Board
<b>Internal Wall Panel</b>	Gypsum Board + Cement Fiber Board + Glass Wool + Light Steel
<b>False Ceiling</b>	Plywood Board + Laminated Board or PVC + Cement Fiber Board
<b>Door</b>	Steel door
<b>Window</b>	Aluminum Alloy or PVC sliding window with rolling shutter
<b>Main Structure</b>	Light C Type Steel Keel

## TECHNICAL PARAMETER

- High seismic performance: Maximum protection more than 8 scales
- Wind-proof: Maximum 60 meters per second
- Fire resistance: All the materials used will be fire resistance.
- Snow resistance: Maximum 2.9KN/M2 as required
- High water and heat insulation: 100 mm in thickness can match more than 1m thickness of brick wall.
- High acoustic insulation: 60db of exterior wall 40db of interior wall

## INSTALLATION INSTRUCTION

We will provide you full instruction manual and excellent after sale services. For special projects, we can also send our engineer to help you move in with satisfaction.



## ADVANTAGES

- Safety and reliable light steel flexible structural system
- Easy to assemble and disassemble, repetitive to use
- Doors, windows and indoor partition can be located at any position, stairs is outside
- Light steel structure treated by anti-corrosive spray handling for long use
- Strictly sealing, thermal insulation, water, fire and moisture-resistant
- Any dimensions and customized designs are available

## Who We are

We are a group of aggressive innovators whose main forte is providing shelters for families, workers, and transients applying state of the art systems that are cost and time efficient.

After Relentless Researches On Innovative Housing Systems Our Managers, Engineers And Architects, Have Come Up With An Impeccable Approach In Providing Comfortable Homes For Masses With Meager Means.

We have applied tests, engineering expertise and architectural aesthetics and our now introducing a pre-fabricated housing accommodation system that will surely address the concerns of accommodating informal settlers, provide easy to build classrooms, dormitories and other similar necessities.

Keeping apace with the necessities of the time, we are introducing a pre-fabricated housing/ accommodation system that will surely address the concerns of accommodating informal settlers.

Contemporary times require contemporary approaches that will keep up with effective time and cost management. With the ever booming population and the need to shelter ever growing communities, pre fabricated housing system is decidedly the outstanding solution for providing comfortable, affordable and aesthetically designed housings.

We at SMART HOUSE are leaving no stone unturned in researching and applying new technologies and to provide ideal homes for our communities.



### CONTACT NUMBERS

+632 806.7922

+63 920.9072389

+63 916.5419111



### EMAIL

[smarhouseprefab@yahoo.com](mailto:smarhouseprefab@yahoo.com)



### SHOWROOM

128 Kamuning Road, Quezon City







[smarthouseph.com](http://smarthouseph.com)